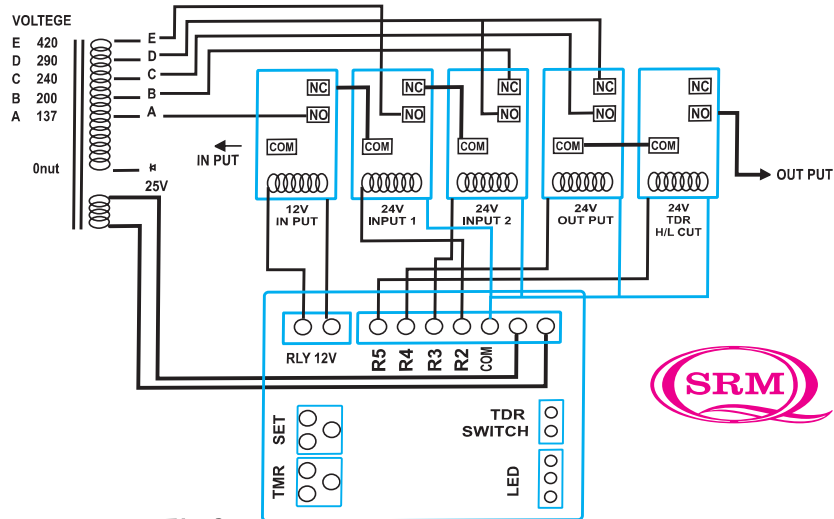


WIRING DIAGRAM FOR MICROCONTROLLER BASED DIGITAL STEBLIZER KITS

2HS MODEL 2 PHASE;90 -420VAC 7 STEP

SPECIAL FEATURES:-

1. THIS CARD IS DESIGNED FOR IN PUT RANGE 90vTO 420v.
2. IT HAS HIGH CUT OF WITH DELAY OF 2 SEC. Ia IT DOES OF THE CUT OFF RL I FOR 0 VOLTEGE REMANIS ON OR ABOVE 260v FOR 2 SEC
3. IT SHOULD HAVE TWO TYPE OF TIME BELOW SELECTED THROUGH JUMPER Ia IF JUMPER IS SHORT DELAY IS OF 3 SEC.



TRANS FARMER DETAILS

2 KVA: 7 B NO. 3 INCH

E 418 V	501 TURNS	17 (SWG)
D 290 V	348 TURNS	
C 240 V	280 TURNS	
B 200 V	240 TURNS	18 (SWG)
A 137 V	185 TURNS	
Neutral 0	0	
22 VLT	27 TURNS (25 SWG)	
	0	

5 KVA: 8 B NO. 5 INCH

E 418 V	293 TURNS	13 (SWG)
D 290 V	203 TURNS	
C 240 V	168 TURNS	
B 200 V	140 TURNS	12 (SWG)
A 137 V	96 TURNS	
Neutral 0	0	
22 VLT	16 TURNS (25 SWG)	
	0	

10 KVA: 8B NO. 4 INCH

E 418 V	251 TURNS	13 (SWG) DOUBLE
D 290 V	174 TURNS	
C 240 V	144 TURNS	
B 200 V	120 TURNS	12 (SWG) DOUBLE
A 137 V	82 TURNS	
Neutral 0	0	
22 VLT	14 TURNS (24 SWG)	
	0	

90V-440V

NOTE
IN PUTC RL1 SHOULD BE 12 VOLTS DC